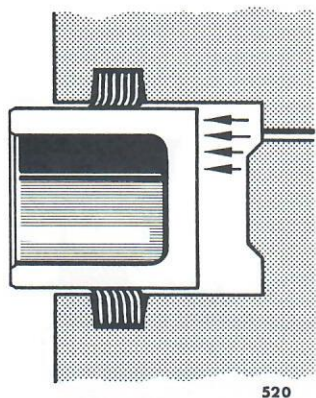


944 Turbo Front Wheel Brake Calipers

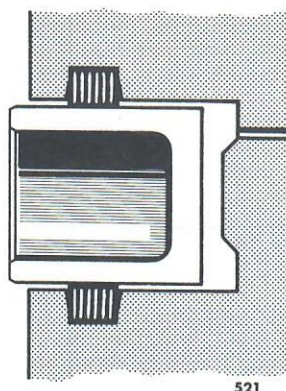
The groove in the brake cylinder of the brake caliper, in which a rubber seal (straight-faced ring) is installed for the brake piston, was given a knock-back chamfer (arrow). This chamfer gives the seal greater lateral tension while applying the brakes.

After releasing the brake pedal, the brake piston is pulled back further in its original position than previously.

Clearance between the brake pad and brake disc is increased because of this measure, so that brake discs can turn without restriction even with strong lateral loads, e.g. while cornering.



Brakes Applied



Brakes Released

Brake Piston Installing Information

Brake cylinder paste "Unisilikon TK 44 N2" from Klüber must be used for the installation of brake calipers. This is also applicable for all brake calipers retroactively in the repair sector. This paste is available from Parts in 50 gram tubes.

ABS Hydraulic Control Unit (Only 944 Turbo)

ABS hydraulic control unit has larger cross section size openings on the hydraulic end. This is necessary because of brake calipers with larger piston diameters on the front axle. Identification: blue-colored data plate.

ABS hydraulic control units cannot be installed in cars before 1989 models.